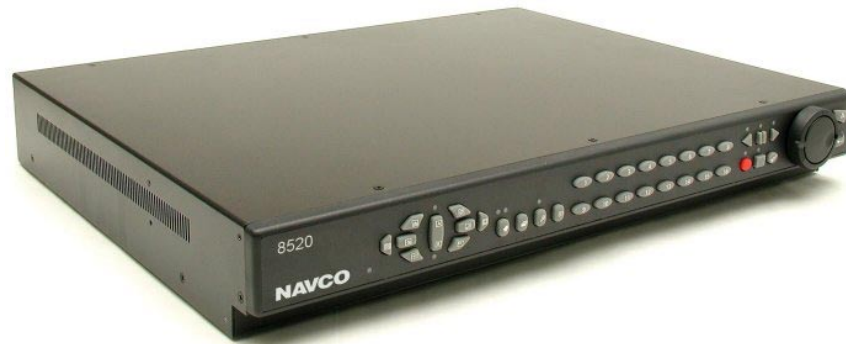


8520

Digital Recorder



The NAVCO 8520 combines the functionality of a triplex digital multiplexer and a digital recorder in one easy to use unit. The 8520 offers high frame rate recording, extremely large internal storage capacity, time lapse and motion-based recording modes, per camera recording speed and quality settings, dry contact and motion based alarms, pre- and post-alarm recording, and automatic system configuration, so the 8520 is ready for immediate use out of the box.

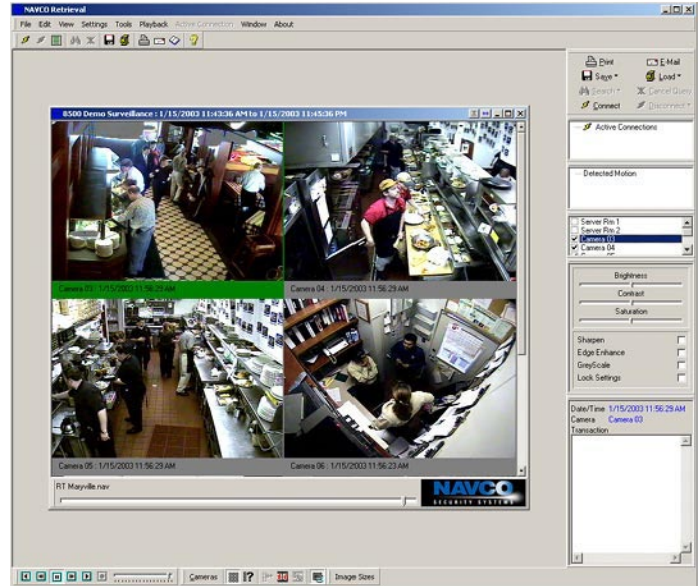
The VCR-style controls offer a simple, intuitive interface for viewing video, and the front panel Jog and shuttle controls permit frame-by-frame image viewing and fast forward or fast reverse playback. The NAVCO 8520 can also be accessed via NAVCO's Retrieval software, the same remote application that communicates with all of NAVCO's digital recorders.

KEY FEATURES

- Intuitive Controls*** The NAVCO 8520 combines the controls and functionality of a multiplexer and VCR. Easy-to-use front panel controls allow for flexible operations without adding unnecessary complexity.
- Triplex operation*** The 8520 offers true triplex operation, meaning that images can be recorded, live images can be viewed, and archived images can be played back, all simultaneously.
- Flexible Remote Viewing and Retrieval*** Images can be viewed live or retrieved from storage via NAVCO's Retrieval software. Retrieval offers a flexible, easy to use interface, yet offers an impressive array of features. From a simple desktop PC, a user can review live and archived images from any number of recorders simultaneously.
- Transaction Interface*** The NAVCO 8520 can be configured as a transaction-based recorder, associating images with point of sale, ATM, or teller line data. Images can be retrieved with a simple search based on any information within the transaction data.
- Large Storage Capacity*** The 8520 can be configured with up to 1 terabyte of internal storage. Additionally, an external disk array can be used, increasing total storage capacity to more than 2 terabytes, allowing video to be stored for weeks, months, or even years.
- High Frame Rate Recording*** The 8520 captures up to 60 images per second and supports up to 16 video inputs.

Additional Features & Options

- Compliant with FBI and police evidence requirements.
- Look in while recording. Even record what you see on your PC.
- Completely network compatible. Preferred by IT departments.
- Image quality adjustable. Maximize storage and image quality.
- "Quick Search" database for transaction and event investigations.
- Save evidence to a file reviewable by anyone with a PC running Microsoft 95/98/NT/2000/XP
- Network friendly "connect list". Your site list can be available to anyone you desire over your network.



ORDERING INFORMATION & SPECIFICATIONS

Image Capacity/Storage Time

(Refer to the Disk Capacity/Frame Rate chart below); Note: Values given are approximate for recorded NTSC video.

Disk Capacity	Pictures Per Second (pps) – High Resolution *							
	0.125	1	2	3	5	10	30	60
640 GB	2155 days	270 days	135 days	90 days	54 days	27 days	9 days	4.5 days
1 TB	3367 days	421 days	211 days	140 days	84 days	42 days	14 days	7 days

* Multiply duration by 1.375 for Medium Resolution or 2.2 for Standard Resolution

Optional features offered for the 8520 include an external disk array, allowing for total storage of over 2 terabytes; and transaction interface, offering the possibility of interfacing as many as 16 POS terminals, ATMs, or teller lines to the 8520, and associating video with the corresponding transaction data.

Inputs:

Camera 16 looping BNC, auto-terminating
 RS232 Port 1 DB9 Male (POTS, remote control)
 RS232 Port 2 RJ45 (ASCII text insertion, events)

Video Out:

Mon A Y/C S-VHS, 4 pin mini-DIN
 Mon A Comp. BNC connector (NTSC)
 Mon B Y/C S-VHS, 4 pin mini-DIN
 Mon B Comp. BNC connector (NTSC)

Resolution: 720 pixels (horizontal) x 484 lines NTSC/EIA

Compression: Wavelet

Colors: YUV 4:2:2, 16.8 million

Grayscale: 256 levels

Hard Disk: Configurable

External Archive: Modified SCSI port (1 ea. DB 50-S-SCSI)

Standard IEEE 1394 connector

Record Speeds:

Selectable: 0.125 pps – 60 pps; Event, Time Lapse, or Both

Network Interface:

10/100 Mbps Ethernet (RJ45)

Alarm Interface:

Inputs Programmable N/O or N/C
 Outputs (2) form-C relays, each N/O and N/C, 0.5 A

Dimensions: 17.42 x 13.5 x 2.486 inches

Weight: Approximately 16 lbs. (7 Kg)

Power Consumption: 35 watts nominal

Temperature: 32°F - 104°F (0 °C – 40°C), operating

Humidity: 90%, non-condensing