

8510

Digital Recorder

The 8510 combines a triplex multiplexer and a digital video recorder into a single unit, and adds features that make it even easier for you to find, use, and export the images that you need.



The NAVCO 8510 comes in 10 and 16 channel configurations, and allows the user to program individual record speeds, record mode, and image quality. The 8510 will support recording speeds of up to 60 images per second, and provides both surveillance and motion based recording modes. The 8510 also is equipped with an internal CD burner and a one-touch print button that allows you to print the active image on any supported printer

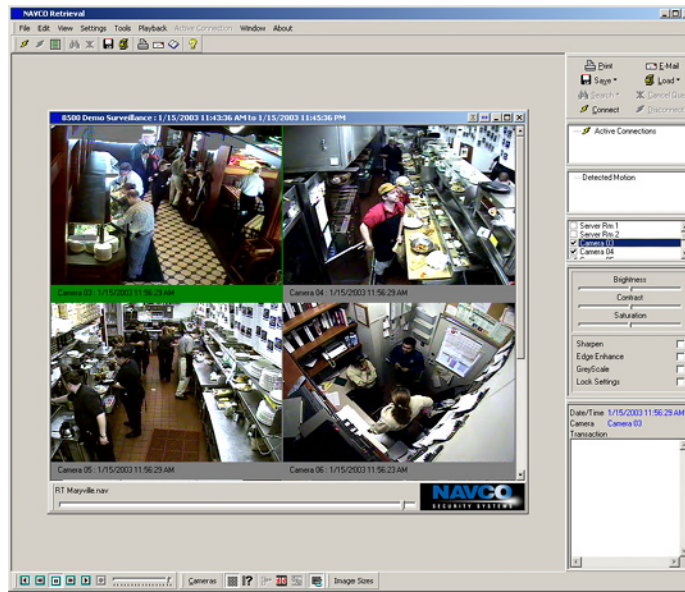
The VCR style controls of the 8510 offer a simple, intuitive interface for viewing video, and the front panel Jog and Shuttle controls permit frame-by-frame image viewing and fast forward or fast reverse palyback. Two monitors can be connected to the unit, allowing you to view live images and play back prerecorded video simultaneously. Additionally, the NAVCO 8510 can be accessed via NAVCO's Retrieval software, the same powerful and easy to use remote application that communicates with all of NAVCO's digital recorders.

KEY FEATURES

- | | |
|--|---|
| Triplex Operation | The 8510 offers true triplex operation, meaning that images can be recorded, live images can be viewed, and archived images can be played back, all simultaneously. |
| Flexible Local & Remote Viewing | View live or prerecorder images locally by taking advantage of the 8510's easy to use VCR-style controls, or retrieval images remotely using NAVCO's Retrieval software, adding significantly to the power and flexibility of your search and review tools. |
| Built in CD Burner | Easily copy just the images you want to CD for archiving or law enforcement by taking advantage of the 8510's built-in CD burner and single button CD archiving interface. |
| Transaction Interface | The NAVCO 8510 can be configured as a transaction-based recorder, associating images with point of sale, ATM, or teller line data. Images can be retrieved with a simple search based on any information within the transaction data. |
| One-Touch Print Button | Easily print out a copy of any image directly from the front panel with the 8510's print button. |
| Audio Recording | The 8510 can record a single channel of audio, allowing you to capture valuable information for review. |
| Per Camera Recording Rates | Each camera can be configured to record at individual recording speeds, allowing you to prioritize critical cameras for storage and review. Record modes and image quality can also be programmed on a per camera basis. |

Additional Features & Options

- Compliant with FBI and police evidence requirements.
- Look in while recording. Even record what you see on your PC.
- Completely network compatible. Preferred by IT departments.
- Image quality adjustable. Maximize storage and image quality.
- "Quick Search" database for transaction and event investigations.
- Save evidence to a file reviewable by anyone with a PC running Microsoft 95/98/NT/2000/XP
- Network friendly "connect list". Your site list can be available to anyone you desire over your network.



ORDERING INFORMATION & SPECIFICATIONS

Inputs:

Camera	10 or 16 looping BNC connectors, NTSC/EIA or PAL/CCIR compatible; auto-terminating
Termination	Automatic, 75 Ohm or Hi-Z if looped
RS232 Port 1	DB9 male connector, for POTS, remote control and front panel emulation
RS232 Port 2	RJ45 connector for ASCII text insertion and event generation
Audio Aux	DB9M, Line Level

Video Outputs:

Monitor A Composite	One monitor A multiscreen output, BNC connector, NTSC/EIA or PAL/CCIR compatible
Monitor B Composite	One monitor B full-screen switched output, BNC connector, NTSC/EIA or PAL/CCIR compatible

Network:

Type	10/100 Ethernet (auto-sensing); one RJ45 connector
------	--

Video:

Colors	YUV 4:2:2, 16.8 million colors
Grayscale	256 levels
Horizontal Resolution	720 pixels
Vertical Resolution	484 active lines NTSC/EIC; 576 active lines PAL/CCIR

Alarm Handling:

Alarm Inputs	10 or 16 fixed or N/O
Alarm Outputs	Two form-C relays, fixed N/O; rated 0.5 A
Alarm Latching	Three settings: latched, transparent, timed-out, programmable 1-100 sec
Alarm Recording Control	Programmable priority interleaved or exclusive
Alarm Displays	Full screen

Storage: Supports 2 Hard Drives

Recording:

Record Speed	Selectable; 60 pps to 0.125 pps; event, time-lapse, or both
Compression	Wavelet format

Printing:

Ethernet Port	Requires compatible printer connected via print server
---------------	--

Miscellaneous:

Power	35 W nominal
Temperature	0 to 40 °C (32 to 104 °F), operating
Relative Humidity	90%, non-condensing
Weight	21 lb (9.525 kg)
Dimensions	13" (W) x 3.5" (H) x 13.5" (D) (33.02 cm x 8.89 cm x 34.29 cm)